

Recycling & China: What's Next?



China Waste Import Restrictions

The emerging policy of:

- New waste import bans
- Stringent waste import restrictions
- Tougher enforcement at ports
- Inspections at MRFs
- Big reduction in import quotas

is making the **Green Fence** look like a minor issue



SWANA[®]



China/SWANA

- **SWANA has been at the center of this issue since July 2017 when China issued Notifications containing a vague waste import ban with the World Trade Organization (WTO)**
 - Complicated issue with wide variety of stakeholders
 - Federal agencies – Commerce, USTR, EPA
 - State agencies
 - Local governments
 - Recyclers/national companies
 - Foreign governments (Canada, EU)
 - Other associations (ISRI, NWRA, AF&PA)



SWANA[®]



China Waste Restrictions

- **SWANA and other stakeholders filed WTO comments in August and December 2017**
 - Comments sought clarity re scope/timing & expressed concerns re feasibility of domestic markets by 1/1/18
 - Concern over contamination standard
 - Agreed with China's interest in improving environment
- **We've met with US Commerce Dept/USTR/Canada**
 - Recycling discussed in Beijing at bilateral trade meetings
 - Recycling raised at WTO committee meetings in Switzerland

China Waste Restrictions

- **SWANA met with EPA in early October as price and other impacts (import licenses) began to ripple through U.S.**
- **We've sent two letters to all 50 state environ agencies – providing update on status & focusing on potential disruption to municipal recycling programs.**
 - Core messages: communicate w/ stakeholders & “quality”
 - Several states are in close/ongoing contact with us



China Waste Restrictions Update

- **China finalized the waste import restrictions in early January:**
 - Prohibition on imports of mixed paper & post-consumer plastic maintained (Jan 1, 2018)
 - Slight relaxation of contamination standard to 0.5% except for non-ferrous metals (1%)
 - Implementation date – March 1, 2018
 - Comments requesting a less stringent contamination standard and a longer transition period were ignored.

What Happens Next?



Impact on States

- **Many state agencies are monitoring the impact of China's new rules on state/municipal recycling programs and goals, and taking varying approaches.**
 - Waste Dive 50 state survey
- **States with high recycling rates that export a lot of material to China were the first ones being directly affected.**
 - **Oregon**, Washington, Alaska



Impact on States - Oregon

DEQ has “concurred” with a dozen requests to landfill certain recyclables (only 2% of overall):

“DEQ, working closely with representatives from the recycling industry and local governments, has initiated a short-term stopgap solution to help alleviate the backup of material throughout the collection and processing system.”

<http://www.oregon.gov/deq/mm/Pages/Stakeholder-Resources.aspx>

DEQ is encouraging citizens to:

- Continue to recycle whenever possible**
- Recycle right**
- Prevent waste from the start**



Local Impacts

The impact on municipal recycling programs varies widely, but we expect broader impacts if status quo of lower prices, 0.5% contamination limit, & fewer import licenses continues:

- Depends on whether you export – and where
- Depends on your contract (force majeure?)
- Depends on your contamination level



What should MRF operators be doing?

It's All About Quality....

Clean up your bales!

- **Communicate with customers**
- **Slow down the line**
- **Hire more workers**
 - Some MRFs having trouble finding workers
- **Add new technology**
 - Optical sorters/robotics



What should Local Governments be doing?

May not be best time to expand recycling programs - focus on educating residents/businesses

SWANA/KAB/EPA discussing updating this communication from 2014 – doesn't say what not to place in the blue bin....

How much are you spending on recycling education?



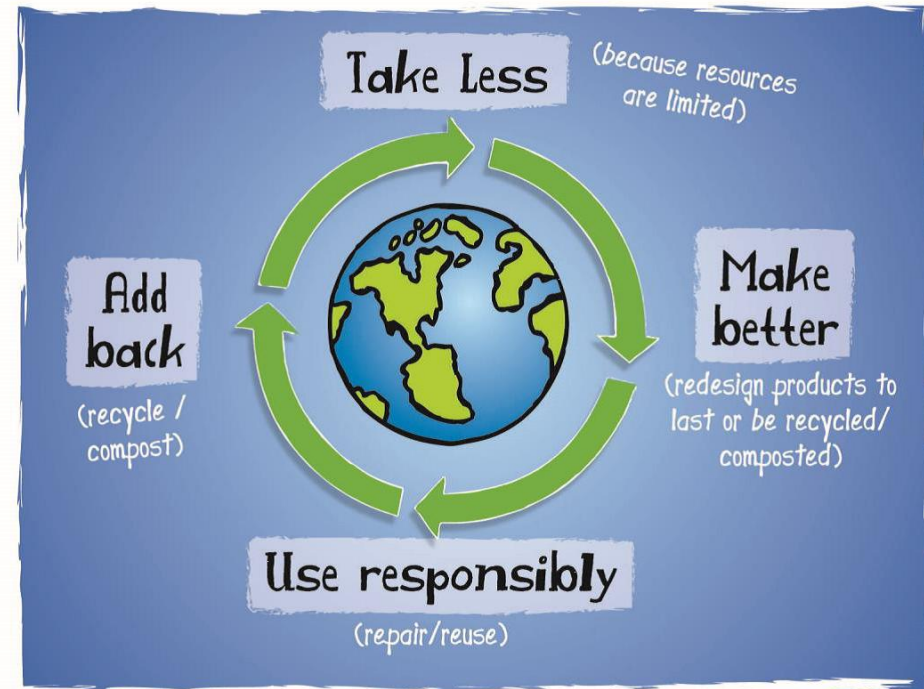
KEEP AMERICA BEAUTIFUL



Emerging Slogans/Ideas

- “When in doubt, throw it out”
- “Clean and dry”
- Beyond 34

China may jump start renewed interest in Zero Waste, Circular Economy and EPR.





RECYCLING ONLY

Deposit Only These Clean Items:



Clean paper, Milk Cartons,
Cardboard (limit 18 x 24)
Junk Mail, Paper Egg Cartons,
Cereal Boxes



Newspapers
Magazines, Catalogs
Phone Books



Plastic Bottles and Jugs
(no caps)
Plastic Dairy Tubs (yogurt
margarine, etc.) no lids



Aluminum Cans
Steel or Tin Cans



Loose Glass Bottles
and Jugs



No Pizza Boxes



No Aerosol Cans



No Hoses



No Plants



No Toys



No Dishes/
Paper Plates



No Juice Boxes
or Pouches



No Tires



No Styrofoam



No Clothes
Textiles/Carpet



No Batteries



No Plastic Bags



No Electronics



SWANA®



SWANA.org

DO RECYCLE
You Can Recycle These Items:

- ✓ Aluminum cans
- ✓ Metal food cans
- ✓ Glass bottles & jars (clear, green and brown)
- ✓ Plastic bottles & small containers #1, #2, #3, #4, #5 & #7 (NO #6)
- ✓ Newspaper, paper & cardboard

PASC COUNTY FLORIDA
Open Spaces. Elegant Places.

Recycle!

PUT THIS STICKER ON THE SIDE OF YOUR RECYCLING CONTAINER, FACING THE STREET.

DON'T RECYCLE
These items ARE NOT accepted in this program:

- ✗ Styrofoam® of any kind
- ✗ Plastic film or bags of any kind
- ✗ Plastic picnicware (plates, cups, utensils, tablecloths)
- ✗ Plastic toys of any kind
- ✗ Dirty, wet or greasy food-contaminated items
- ✗ Wood or tree waste
- ✗ Scrap metal

DO RECYCLE
You can Recycle these items:

- ✓ Aluminum Cans
- ✓ Metal Food Cans
- ✓ Glass Containers (Clear, Green and Brown)
- ✓ Plastic Containers #1, #2, #3, #4, #5 and #7
- ✓ Newspaper, paper or cardboard

DON'T RECYCLE
These items ARE NOT accepted in this program:

- ✗ Styrofoam® of any kind
- ✗ Plastic film or bags of any kind
- ✗ Plastic picnicware (plates, cups, utensils, tablecloths)
- ✗ Plastic toys of any kind
- ✗ Dirty, wet or greasy food-contaminated items
- ✗ Wood or tree waste
- ✗ Scrap metal

- Purchase your own bin, can, or cart from a local retailer. Or, you can use an existing one. Or more than one!
- You must use the reflective sticker pictured above on your (permanent) container. Call your trash hauler for a sticker, or call the County Recycling Office.
- Only use the sticker on a permanent container (no laundry baskets or cardboard boxes or temporary containers, please)
- Place your recycling at the curb the night before your recycling day.





What Can I Recycle?



No need to separate your items, they can all go into the same container!

Yes please!



Aluminum & Steel Cans



Newspapers & Magazines

Office Paper



Glass bottles & Jars



Plastic Bottles, Cups & Jugs



Envelopes & Junk Mail

*including the ones with clear windows!

Cardboard

No thanks!



Styrofoam



Plastic Bags



Candy Wrappers



Juice & Milk Cartons



Medical Sharps



Lightbulbs & Electronics

*note: recycle at Leon County Household Hazardous Waste!



Leon County Office of Resource Stewardship

(850) 606-1800

www.LeonCountyFL.gov/Recycling

SWANA®



SWANA.org



RECYCLE *Right* Every Day

For New Bins
866-NEW-BINS
www.SWA.org

In Your Blue Bin



Aluminum cans



Drink boxes



Glass bottles and jars



Milk and juice cartons



Plastic bottles and containers
(up to 5 gallons)



Steel cans

In Your Yellow Bin



Paper bags



Dry food boxes



Unwanted mail



Newspapers



Corrugated cardboard

(flattened and cut to 3'x3' maximum)



School/
Office paper



Tissue/Beverage
boxes



Magazines/Catalogs/
Telephone books

In Your Garbage



Napkins/
Paper towels



Sandwich bags/
Shrink wrap



Plastic bags



Styrofoam™ containers

Home Chemical Disposal - For more information about the proper disposal of household hazardous waste call 561-697-2700



Computers, Electronics, Batteries, Recyclable batteries, Gas cans, Propane tanks, Pesticides, Fluorescent bulbs, Flares, Used cooking oil, Paint

Return to your local store



Plastic grocery bags



Styrofoam™
Egg cartons/Meat trays

Donate unwanted items



Clothing/Accessories



Appliances



Toys



Furniture



SWANA®



SWANA.org

Working Together for a **GREENER** Key West!

RECYCLE IN CART

PAPER, CARDBOARD, MAGAZINES,
JUNK MAIL, NEWSPAPER
GLASS BOTTLES & JARS
PLASTIC BOTTLES & CONTAINERS
STEEL & ALUMINUM CANS
ALUMINUM FOIL
MILK & JUICE CARTONS



FOR PROGRAM INFORMATION,
CONCERNS WITH SOLID WASTE
SERVICES, OR TO BOOK A
PRESENTATION, CONTACT:

CITY OF KEY WEST

305-809-3776

dgreen@cityofkeywest-fl.gov

KeyWestRecycles.com

DO NOT RECYCLE IN CART

NO PLASTIC BAGS NO FOOD
NO HOSES NO HEAVY ITEMS
NO ROPES NO ELECTRONICS
NO MIRRORS NO CHEMICALS
NO DISHES NO STYROFOAM



WASTE MANAGEMENT
CUSTOMER SERVICE
305-296-8297

CALL TO SCHEDULE BULKY WASTE PICKUP, REPORT A
MISSED PICKUP AND ALL OTHER SERVICE REQUESTS



SWANA[®]

SWANA.org

RECYCLE

THANK YOU FOR RECYCLING THESE:

Cans



Aluminum and Steel Cans
empty and rinse

Cartons



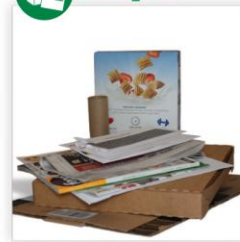
Food and Beverage Cartons
empty and replace cap

Glass



Bottles and Jars
empty and rinse

Paper



Mixed Paper, Newspaper, Magazines, and Flattened Cardboard

Plastic



Kitchen, Laundry, Bath: Bottles and Containers
empty and replace cap

NO!



Do Not Bag Recyclables
No Garbage



No Plastic Bags
(return to retail)



No Food or Liquid
(empty all containers)



No Clothing or Linens
(use donation programs)



No Tangles
(no hoses, wires, chains, or electronics)

Graphics provided by The Recycling Partnership



SWANA[®]



SWANA.org

SWANA's Advice

Floridians' need to take the following steps:

- **Communicate** with all stakeholders/elected officials about the current disruption in global recycling markets
- **Educate** all stakeholders re need to generate high quality material
- **Renew waste reduction** efforts
- **Consider alternate markets** – SE Asia/Latin America
- **Review** current & future recycling goals/regulations



The Goal:



SWANA[®]



SWANA.org

Thank you!

David Biderman

dbiderman@swana.org

240-494-2254

@biderman



SWANA[®]



SWANA.org